

# tone

TECHNOLOGY TO CHANGE YOUR LIFE

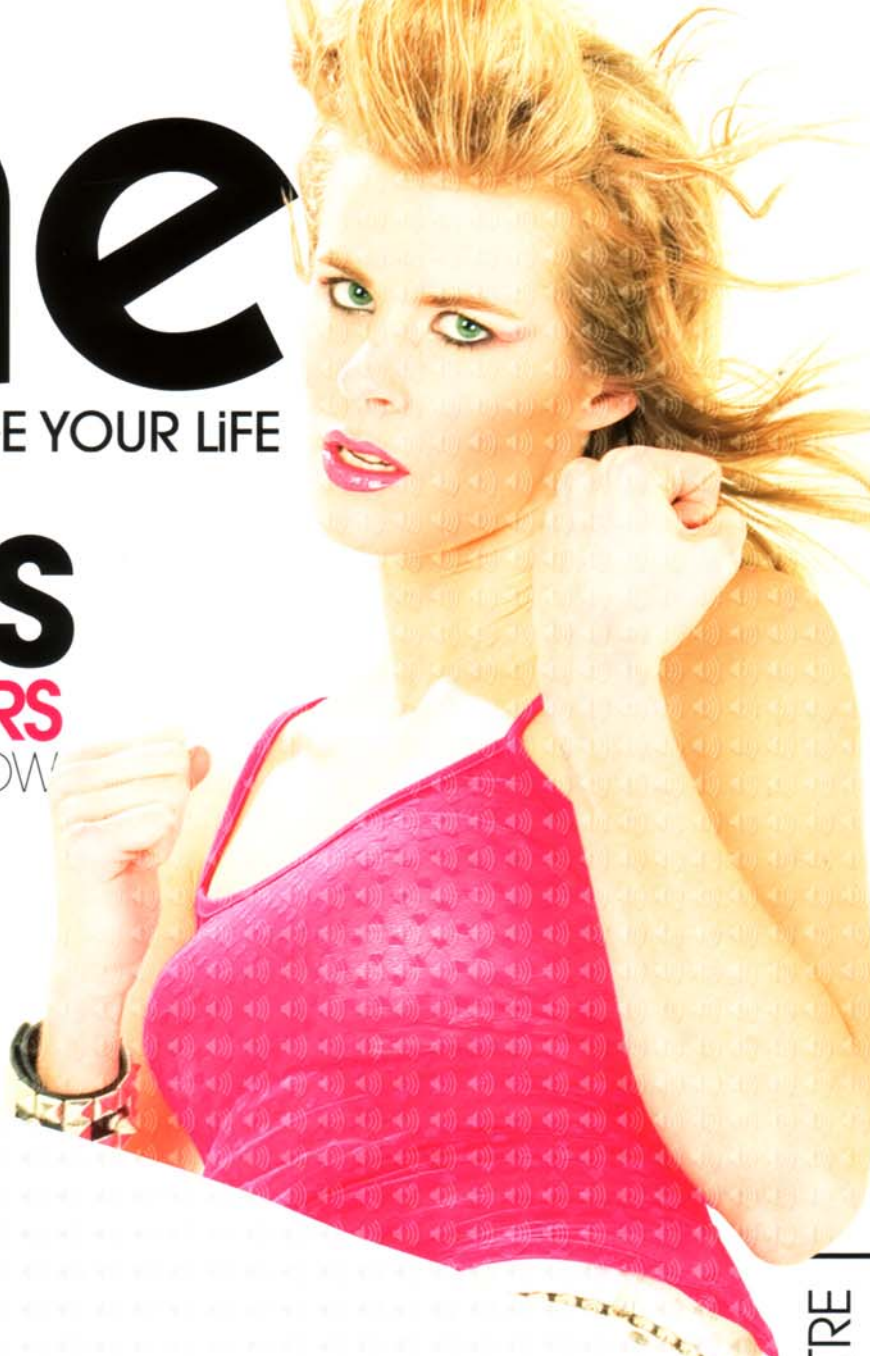
## KICK ASS BOOKSHELF SPEAKERS EVERYTHING YOU NEED TO KNOW!



**PIONEER'S  
50-INCH  
tone GOLD  
AWARD WINNER**



**42 PAGES**  
OF HOT PRODUCT  
REVIEWS AND PREVIEWS



HI-FI | HOME THEATRE

Made in  
**NZ**

ISSUE 53

NOV 2006

\$8.95 inc gst

ParksideMedia





# Mo's Monitors

**MONITOR AUDIO SILVER RS1 SPEAKERS \$999**



Formed in 1972, Monitor Audio have been near the head of the loudspeaker class ever since. This British company has been responsible for many speaker innovations. They were the first company in the world to fully develop composite metal dome tweeters, while their fondness for metal drivers eventually led to the development of their C-Cam bass/mid-units.

It seems the quest for quality both in terms of sound and construction remains as strong as ever. I had the pleasure of reviewing both the Silver RS8 floorstanders and matching RSW12 subwoofer in previous *Tone* group tests, and both were hugely impressive, with the ability to offer the high-end for not too astronomical an asking price.

Now let's turn our attention to the baby of Monitor Audio's Silver RS fleet - the rather fetching Silver RS1.

The RS1s have a beautifully chamfered enclosure, white metal C-Cam driver and silver tweeter surround plate which really makes a bold style statement, even compared with the other supermodels in the test group. Build quality is spectacular; the modest-sized cabinets needed quite a bit of heft to pick up and place on the stands. The review samples came clad in a most delicious Cherrywood veneer. In fact, they seemed carved from solid wood. Definitely no-one will mistake this for a vinyl wrap.

A set of good quality bi-wireable five-way binding posts is supplied, while Monitor Audio's 150mm C-Cam bass/midrange and 25mm gold dome tweeter is employed to change all that electrical energy into music.

First impressions were very good indeed. The little MAs provided a nicely dynamic sound with smooth mids and high frequencies, while the lower frequencies were tight and punchy. Ultimate bass extension was lacking, but what was there was immediate and fast-paced, while their imaging qualities were among the best on test.

The Carla Bruni disc gave a hint of the delicate nature of the RS1s, although her vocals seemed more up-front than the Enerys (for instance), they had more sweetness and realistic

body to them. Encouraged by this, I turned to the jazz bass supremo Stanley Clarke's *Soundtracks* CD. It's an extremely live and dynamic recording and the RS1s responded with real gusto. It was easy to follow his complicated basslines, while the combination of detail and impact made for a thrilling listen.

International Observer's *All Played Out* is a dub album, and not what you'd probably feed a pair of small stand mounts. However, the RS1s handled themselves really well here and, although low bass was light compared with larger floorstanders, they really grooved along with excellent timing and punch. So, it's two thumbs up for the Monitors.



## DETAILS

### CONTACT

dencoaudio.co.nz

### SPECIFICATIONS

**FREQUENCY RESPONSE:**

43Hz - 30kHz +/-3dB

**POWER HANDLING:**

80W RMS

**SENSITIVITY:** 90dB

**NOMINAL IMPEDANCE:**

Six ohms nominal

**HIGH FREQUENCY**

**DRIVER:** One-inch Gold

dome C-Cam tweeter

**LOW FREQUENCY**

**DRIVER:** Six-inch

C-Cam bass/midrange

**ENCLOSURE TYPE:** Rear-

ported bass-reflex

**DIMENSIONS:** 312 x

185 x 240mm (HxWxD)

**WEIGHT:** 6kg each packed

### PROS

- + Lovely build with classy cabinetry
- + Easy amplifier load means it doesn't need a big amplifier
- + Involving and musical
- + Doesn't try too hard

### CONS

- x Not much really to complain about

### VERDICT

A supermodel that sings like a bird

Aesthetics	92%
Performance	90%
Features	88%
Functionality	91%
Price Value	90%
Overall	

