

<sup>TM</sup> **RADIUS**  
*making space for music & movies*



 **MONITOR AUDIO**<sup>®</sup>

WITHOUT WISHING TO SOUND LIKE I'VE BOUGHT SHARES IN MA, I CAN'T  
FAULT THEIR CONSTRUCTION. EVERYTHING, FROM THE CABINETRY, PIANO  
BLACK GLOSS FINISH AND DRIVER COMPLIMENT JUST SEEMS RIGHT TO ME...

I CAN'T FIND FAULT - AND IT SHOWS IN THE LISTENING.

HI-FI WORLD, MAY 2006

THE ULTRA-VERSATILE RADIUS RANGE DELIVERS UNPRECEDENTED  
AUDIO RESOLUTION. WHATEVER YOUR ROOM COLOUR, SHAPE AND SIZE,  
YOU'LL ENJOY PERFECT CO-ORDINATION.



# H A R M O N Y   A T   H O M E

There's no need to compromise your cherished interior design to enjoy fantastic sound.

With Radius loudspeakers from the world-renowned loudspeaker specialist Monitor Audio, you're assured perfect performance through ultra-compact designs in as many as twelve colour options.

Match the texture of your rooms with luxurious real wood or piano lacquer finishes and satisfy your desire for exceptional fidelity with the widest choice of loudspeaker systems for hi-fi and home cinema.

Regardless of room size, shape or application, Radius loudspeakers blend with your home as perfectly as your choice of room colour, so that your personality and your taste for great audio are emphatically expressed.

---

P E R F O R M A N C E ,   T E C H N I C A L   E X C E L L E N C E ,   I N N O V A T I O N ,

S U P E R I O R   A E S T H E T I C   D E S I G N

# MAKING SPACE FOR MUSIC & MOVIES

## THE RADIUS CONCEPT

Many style-orientated speaker systems adopt a “high-tech” look with interesting shapes and plastic casings. With the Radius range however, Monitor Audio has aimed for altogether more exceptional results, both visually and sonically.

In developing Radius, we’ve remained true to the principles that make Monitor Audio speakers so sought after across the globe. There are no gimmicks, no shortcuts, no fads - just a commitment to quality in all its respects.

Combining advanced driver technology from our acclaimed reference models with superlative build quality and finish, Radius elevates traditional sat/sub performance to a level which will astound lovers of music, movies and design in equal measure.



## PERFORMANCE & VERSATILITY



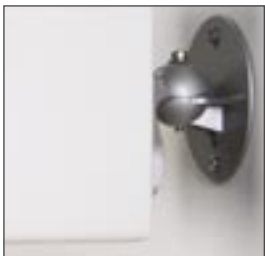
**25MM GOLD C-CAM® TWEETERS**  
Ceramic coated aluminium/magnesium was originally developed by the aerospace industry for use as blades in jet engines. It exhibits ideal qualities for use as a tweeter dome, avoiding the 'break-up' or bending distortions produced by more conventional materials.



**MMP® MK 2 BASS-MID DRIVERS**  
Monitor Audio's second generation metal matrix polymer cone material now uses a high-pressure injection moulding process to achieve different thicknesses at desired points of the cone geometry. Greater cone stiffness and consistency provide improved bass and clearer midrange frequencies.



**WIDE CHOICE OF FINISHES**  
Luxurious white and piano black lacquer finishes join video silver and a selection of real wood veneers to make décor-matching easy. With each Radius speaker, perforated metal grilles are supplied in black and silver to fine-tune the décor match.



### BESPOKE WALL BRACKETS AND STANDS

Position Radius speakers anywhere using the high quality metal wall bracket supplied with the satellites. Alternatively, use the super-chic optional floor-stands for Radius 45, 90 and 180, and the optional desktop stand for the Radius 225 and 250.



## RADIUS 45

The smallest speaker Monitor Audio has ever made. Inspired by decades of design excellence, the Radius 45 represents Monitor Audio innovation at its most concentrated.

With the R45 you're assured the quality and craftsmanship of our reference loudspeakers with the versatility that comes with the Radius range.

The diminutive Radius 45 is a speaker with a size-defying performance. Its secret is a rear-firing gold C-CAM® tweeter, which spreads and magnifies the sound around the room to create an impressive effect. Designed to dovetail with the Radius 360 subwoofer and available in the Radius range of real-wood veneer, lacquer and grille colour options, the super-compact R45 will blend with your décor in any room you choose. Installing the R45 is easy with the pivoting die-cast metal wall bracket supplied or via an elegant stand-mount option.

If you love big sound but cherish your living space, use the Radius 45 in an ultra-discreet stereo or multi-channel A/V system and be surrounded by sound not speakers.



Radius R45 in White Lacquer



Radius R90 in Piano Black Lacquer

## R A D I U S 9 0

Radius 90 is a high-class mini monitor. In contrast to the stark metal appearance of most A/V satellites, it has the same sumptuous real wood veneer and lacquer finishes that grace Monitor Audio's reference speakers. It offers the same engineering standards and attention to detail as well, right down to the radius-edged corners of the cabinet and high-quality, gold-plated cable terminals.

Unprecedented enclosure rigidity and leading edge drive unit technology combine to produce clarity, dynamics and imaging abilities that are unparalleled in a speaker of this size.

Use the R90 as a stereo speaker or blend R90s with the R180 or R225 in the centre channel position. Underpin the system with the rich deep bass of the R360 or R720 for stunning stereo and surround sound.

*"The obvious prowess of this tiny speaker was frankly a surprise; the sound is extremely animated, enjoyable and engaging, yet excellent in conventional hi-fi respects too, such as tonality, high and low frequency extension and imaging."*

*Hi-Fi World*



## R A D I U S 1 8 0

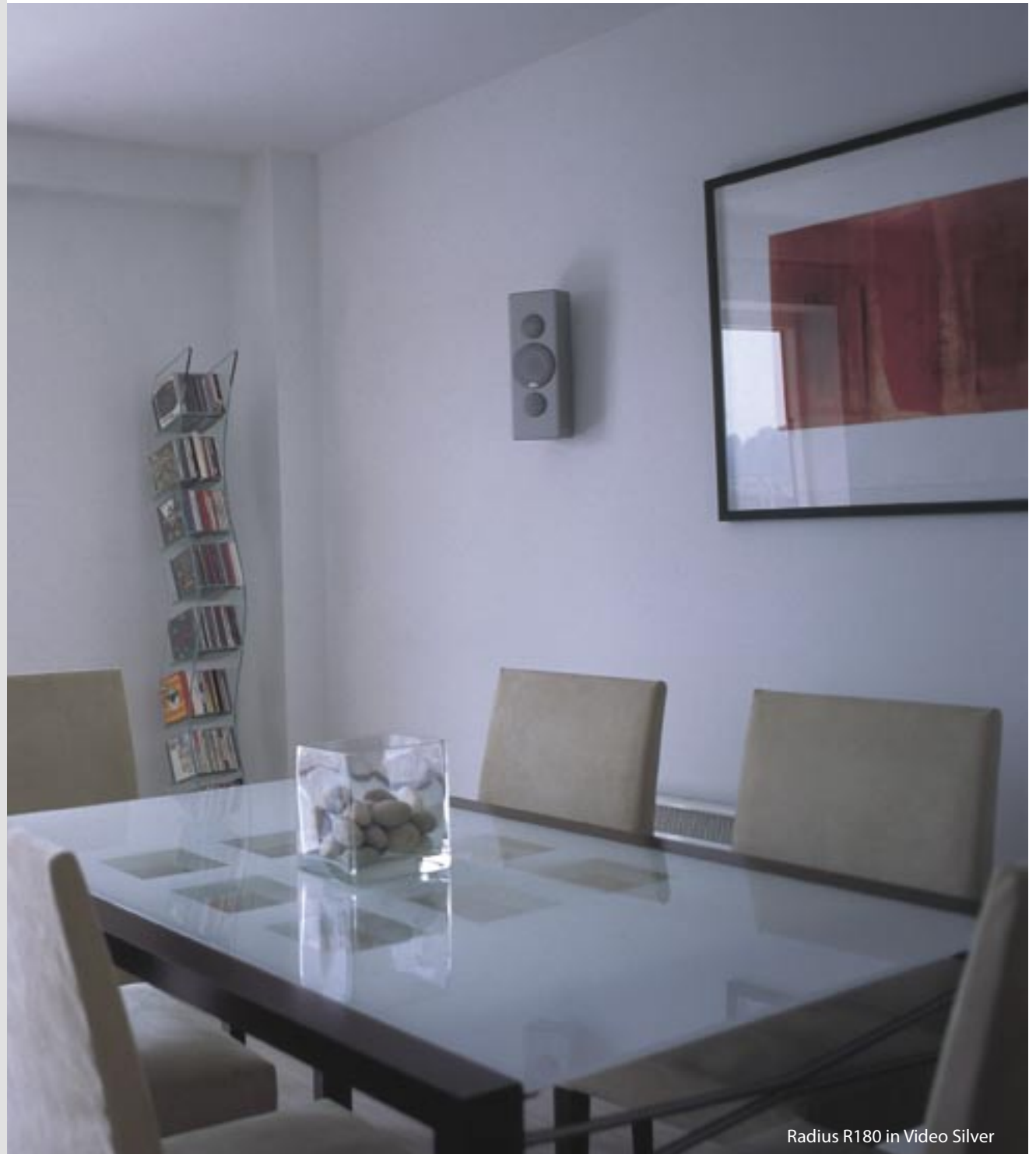
The slightly larger Radius 180 adds more bass to the R90's irresistible blend of virtues. It can be installed vertically as a main, side or rear speaker, or horizontally as a centre channel speaker in a multi-channel music or movie system.

Its enhanced bass performance makes it the perfect choice as a standalone speaker where a subwoofer isn't required. When combined with a Radius subwoofer however, the R180 forms part of a formidably powerful stereo or multi-channel home cinema system.

As with the R90, the R180 is supplied with a high quality die-cast metal wall bracket and a choice of black and silver grilles. The elegant and optional Radius floor-stand provides further positional flexibility.

*"You feel the impact of every crash and gunshot without it making your ears bleed. The 180 is finely matched, and the whole package produces a cohesive portrayal of surround steering effects"*

*Home Cinema magazine*



Radius R180 in Video Silver



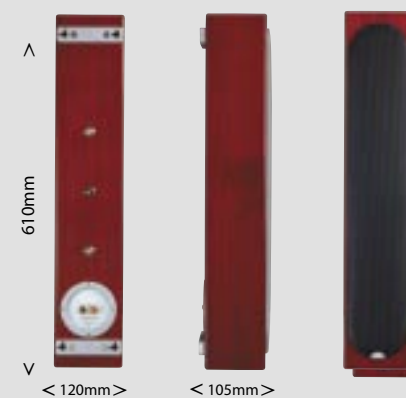
Radius R225 in Video Silver

## R A D I U S 2 2 5

By virtue of its very shallow depth, the Radius 225 is ideal for use with slim video displays or Plasma TVs, as a centre channel or main speaker. The sheer quality of its design provides the wonderful accuracy of Monitor Audio's reference speakers, but its impressive size-defying bass performance can be further extended with the addition of a Radius active subwoofer. Use the R225s with the R360 or R720 to create a compact, perfectly matched yet sonically exhilarating audio/video speaker system. Supplied with full-length black or silver grilles, and in the comprehensive Radius range of finishes, the Radius 225 can be customised to complement its environment from wall-mounted positions, via the slim-profile bracket supplied, or from the desktop using the optional stand.

*"This is an extremely fast sounding system and every transient is dealt with razor-sharp precision. These are disappearing speakers, not just because of the narrow profile. Instead, the speakers produce a sound that makes them 'disappear.'"*

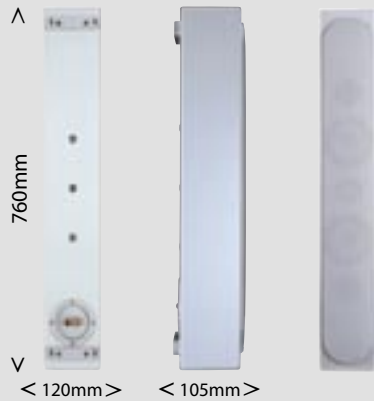
*Essential Hi Fi & Home Cinema magazine*



## R A D I U S 2 5 0

The outstandingly elegant and slender Radius 250 has been designed to be sited vertically or horizontally with larger 42 or 50-inch plasma displays. Providing bass right down to 50 Hz, it can be used as a centre, main, side or rear speaker in a multi-channel music or movie system. At just 95mm deep, its suitability for plasma screen applications or where space is at a premium is unequivocal.

The Radius 250 employs the R225's driver configuration in a larger cabinet. Its enhanced bass performance makes it a desirable space-efficient hi-fi satellite for any room. Add the R360 or R720 subwoofer for even deeper bass definition and further R250s or R225s in surround sound positions to capture all the dramatic impact of multi-channel music and movie sound. Now you can enjoy the unity of high definition picture and high definition sound with a system that enhances the look of your room.



Radius R250 in Piano Black Lacquer



Radius R270 in Piano Black Lacquer

## R A D I U S 2 7 0

At just 12cm wide, the Radius 270 is a super-slim floor-standing loudspeaker designed for genuine full-range performance in a serious stereo or multi-channel audio/video system. The R270 employs an array of technical developments derived directly from Monitor Audio's award winning reference speaker ranges. Excellent fidelity and an elegant profile provide the opportunity to enjoy great sound and discreet design all in one package. Real wood veneer and lacquer finishes add a lustrous appeal, giving the Radius 270 a tactile sense of quality that feels at home anywhere.

Use the R270 as a stylish hi-fi speaker or with the R225 or R250 satellites and the R720 subwoofer as part of a room-friendly, high performance multi-channel music or A/V system.



## RADIUS 360

By any standards, the Radius 360 is a remarkable product. This super-compact subwoofer has the speed, subtlety and pitch accuracy to enhance the highest quality music reproduction. It can also deliver the power and slam demanded by movie soundtracks by virtue of its downward-firing 8-inch driver, controlled by a powerful built-in 100 watt amplifier.

The Radius 360's weight and solidity belie its svelte dimensions, which are so vanishingly compact that the R360 can remain unobtrusive wherever you place it.

*"Pleasingly the Radius sub has the virtue of responding well at average settings – the kind you might begin with by default. When running properly, the bass is well integrated, taut, tuneful with respectable extension."*

*Home Cinema Choice Magazine*



Radius R360 in Video Silver



Radius R720 in White Lacquer

## R A D I U S 7 2 0

The Radius 720 subwoofer proves that diminutive dimensions and dynamite performance are not mutually exclusive.

An evolution of the super-compact R360 subwoofer, its twin downward-firing 8-inch drivers and powerful 250 watt amplifier combine to underpin music and movie sound with a deep bass presence that adds definition and scale to every performance. It's agile enough to bring a sense of momentum to complex fast moving bass lines, and ruggedly efficient in its delivery of plummeting bass transients. Most remarkable of all though is its ability to provide an explosive bass charge with an ease and authority unprecedented for its size.

Its versatile control settings, compact dimensions and a choice of lacquer, video silver and wood veneer finishes make it the perfect partner for all Radius loudspeakers. In harmony with the Radius philosophy, its design will blend beautifully with any environment.



## R S W - 1 2

The RSW-12 active subwoofer provides another stunning dimension to the Radius sound. Its 12-inch (300mm) C-CAM® front-firing driver, powered by a potent 500W (RMS) digital amplifier, will extend the reach of all the Radius speakers to add the deepest drama to movies and music. The RSW-12's lowest frequencies are controlled so expertly that even subtle effects are better defined, enhancing the Radius experience with bass you can feel as well as hear.



Radius Rsw-12 in Piano Black Lacquer

# RADIUS SERIES SPECIFICATIONS



	Frequency Response	Sensitivity (1W@1m)	Nominal Impedance (ohms)	Power Handling Single (R.M.S)	Power Output (R.M.S)	System Power Handling Single (R.M.S)	Maximum SPL	Recommended Amp Requirements	Bass Alignment	Drive Unit Complement	External Dimensions - Excluding Plinth H x W x D mm (inch)	Weight kg (lb)
R45	120Hz – 20kHz	87	8	25	-	50W	101	5 - 50	Sealed Cabinet	1 x 3/4" C-CAM* gold dome, rear firing tweeter. 1 x 3" MMP'2 mid-driver	95 x 95 x 95 (3 3/4 x 3 3/4 x 3 3/2)	0.95 (2)
R90	85Hz – 25kHz	87	8	60	-	100W	105	10 - 100	Rear Ported, Bass Reflex	1 x 1" C-CAM* gold dome tweeter. 1 x 4" MMP'2 mid-driver	190 x 120 x 140 (7 1/2 x 4 3/4 x 5 1/2)	2 (4 1/2)
R180	60Hz – 25kHz	87	8	60	-	100W	105	10 - 100	Front Ported Bass Reflex	1 x 1" C-CAM* gold dome tweeter. 1 x 4" MMP'2 mid-driver	350 x 120 x 95 (13 3/4 x 4 3/4 x 3 3/4)	2.3 (5)
R225	55Hz – 25kHz	90	8	120	-	140W	108	40 - 140	Front Ported Bass Reflex	1 x 1" C-CAM* gold dome tweeter. 2 x 4" MMP'2 mid-driver	610 x 120 x 105 (24 x 4 3/4 x 4 1/8")	4.2 (9 1/4)
R250	50Hz – 25kHz	90	8	120	-	140W	108	40 - 140	Twin, Front Ported Bass Reflex	1 x 1" C-CAM* gold dome tweeter. 2 x 4" MMP'2 mid-driver	760 x 120 x 105 (29 15/16 x 4 3/4 x 4 1/8")	4.3 (9 1/2)
R270	50Hz – 25kHz	89	8	120	-	140W	107.5	40 - 140	Front Ported Bass Reflex	1 x 1" C-CAM* gold dome tweeter. 2 x 4" MMP'2 mid-driver	925 x 120 x 140 (36 7/16 x 4 3/4 x 5 1/2)	10 (22)
R360	27Hz – 180kHz	-	-	-	100W @ 4 (R.M.S)	-	-	-	Downward Ported Bass Reflex	1 x 8" Ultra long-throw sub bass driver. Hand treated paper cone woofer	325 x 225 x 320 (12 3/8 x 8 7/8 x 12 5/8)	13.9 (30 1/2)
R720	25Hz – 180kHz	-	-	-	250W @ 4 (R.M.S)	-	-	-	Rear Ported Bass Reflex	2 x 8" Ultra long-throw sub bass driver. Hand treated paper cone woofer	455 x 255 x 480 (17 15/16 x 8 7/8 x 18 7/8)	20.1 (44 1/5)
Rsw-12	21Hz-120Hz	-	-	500 watts (R.M.S) 1000 watts (peak)	-	-	-	-	Sealed cabinet. 25mm (1") MDF construction with radial cross bracing	1 x 12" C-CAM* subwoofer driver featuring triple suspension and 4" long-throw voice coil. Vented chassis design.	340 x 340 x 370 (13 3/8 x 13 3/8 x 7 7/8)	25.5 (56)



For details of your nearest Monitor Audio dealer visit our website at:

[www.monitoraudio.co.uk](http://www.monitoraudio.co.uk)

T. +44 (0)1268 740580

E. [info@monitoraudio.co.uk](mailto:info@monitoraudio.co.uk)

UK

[www.monitoraudioussa.com](http://www.monitoraudioussa.com)

T. 905 428 2800

E. [info@monitoraudio.com](mailto:info@monitoraudio.com)

USA